

Agenda - Liaison Group Forum

1. Introductions
2. Apologies
3. Minutes of last meeting
4. Matters arising
5. Project update:
 - January – March
 - Three month look ahead
6. Planning obligations:
 - Conditions
 - Section 106
7. Complaints and correspondence
8. Community engagement
9. A.O.B



Highways – pedestrian safety, Whitby



Highways – pavement works

East Whitby Primary School



Eskdale Road



Highways – Helredale crossing



Highways – site access



Highways – A171 / B1416 junction



Highways – site entrance



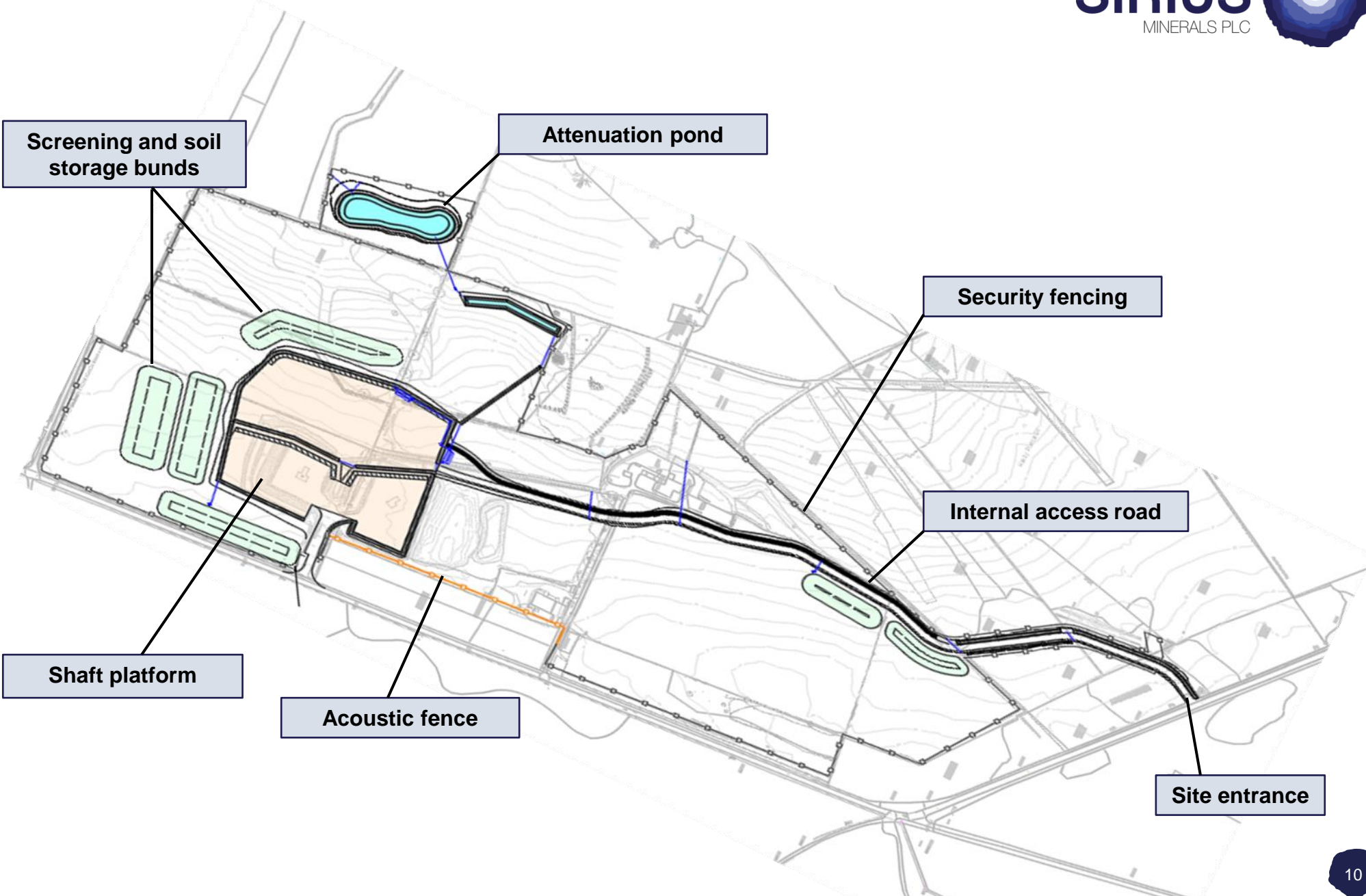
Highways – A171 / B1416 junction



Geotechnical investigation



3 months ahead - enablement and site preparation



Screening and soil storage bunds

Attenuation pond

Security fencing

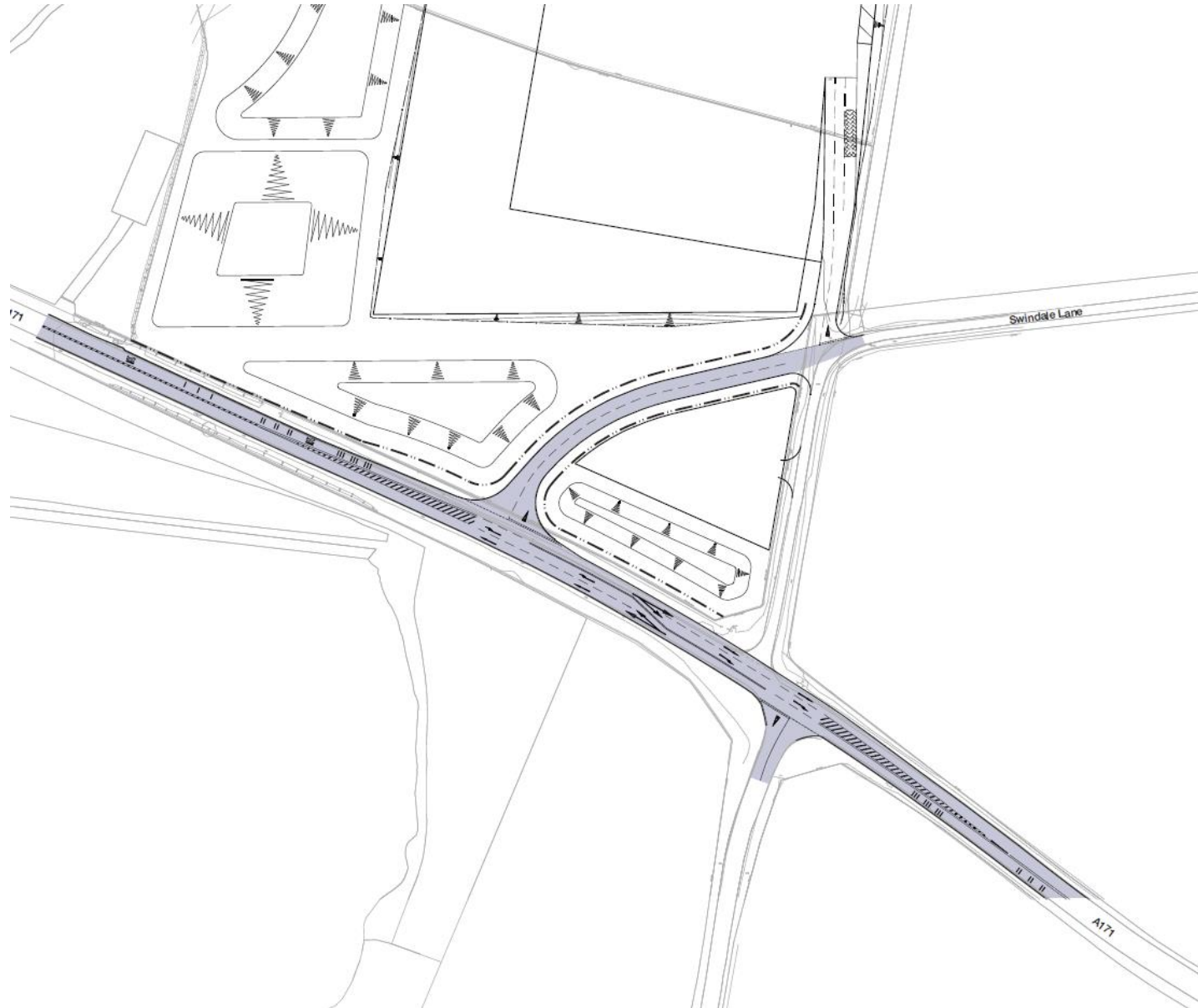
Internal access road

Shaft platform

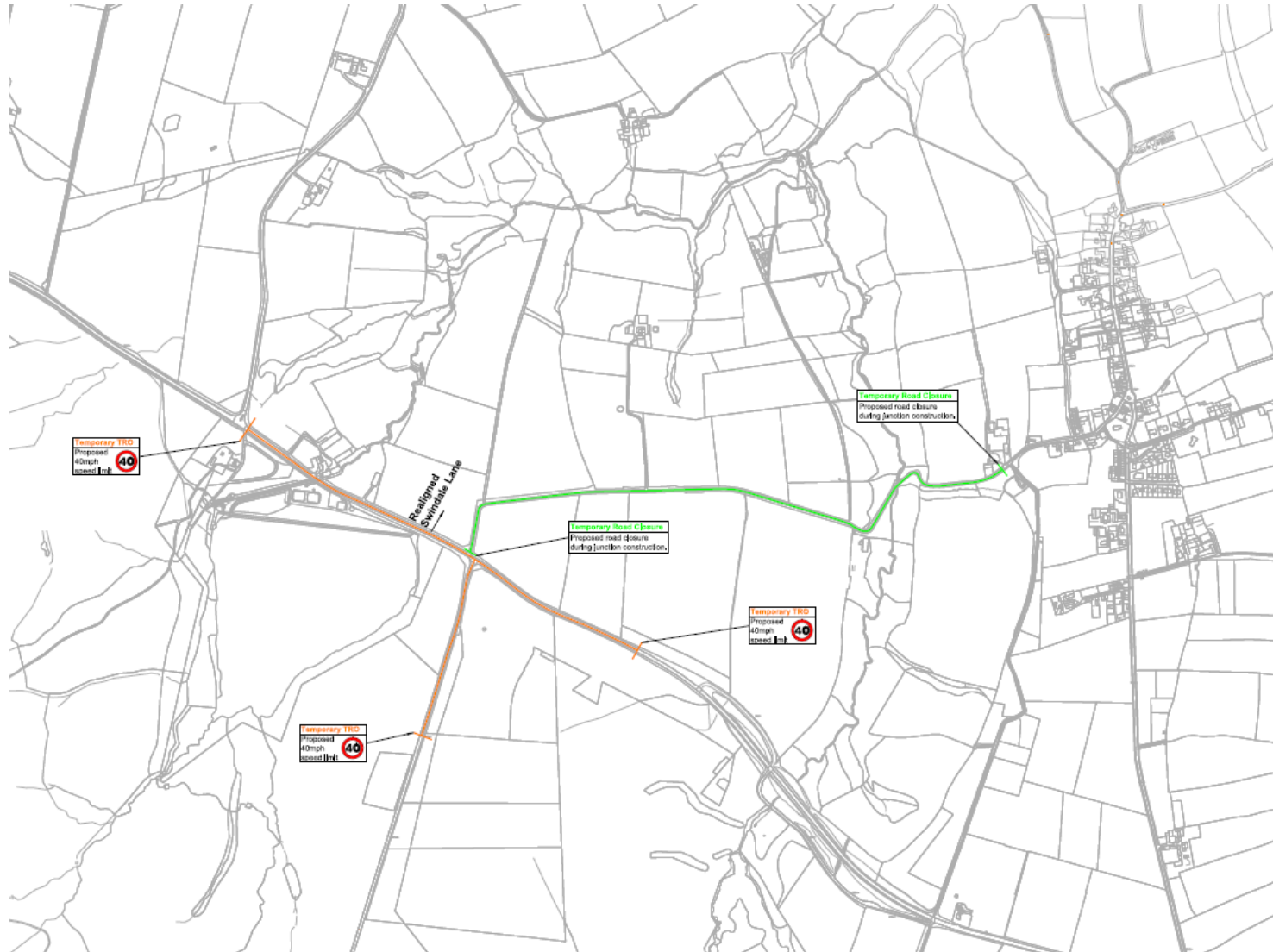
Acoustic fence

Site entrance

Highways works - Swindale Lane



Swindale Lane – temporary closure

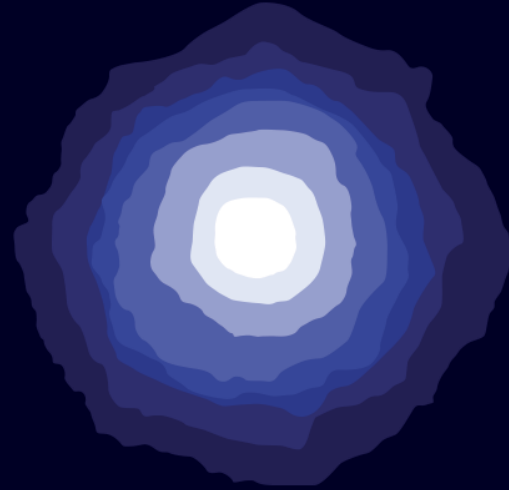


Site preparation



SIRIUS

MINERALS PLC



THE FUTURE OF
FERTILIZER

Approved transport route

